

>docufied<[®] for Kodak

Guide for Installation

Version 1.0.3.1
Status: 06/2010

We reserve the right to change the software in comparison to the description in this documentation. We cannot guarantee that all implemented features work in all possible combinations on all possible systems and in all possible system configurations.

Table of Contents

1. Important installation instructions	4
2. Preparations for installation	4
2.1. Installation-Checklist Client components.....	5
2.2. Installation-Checklist ELO	5
2.3. Installation-Checklist Kodak Capture Pro.....	5
3. Help and Support	6
4. Installation	7
4.1. Language.....	7
4.2. License Agreement.....	7
4.3. Setup Type	8
4.3.1. Complete	8
4.3.2. Custom.....	9
4.4. Abort	10
5. Removing the output format.....	10
6. Copyright	11

1. Important installation instructions

We implore you to take a minute and to heed the following installation instructions to the letter.

2. Preparations for installation

It is imperative to check a few important points on your system respectively to configure your system to guarantee a successful installation.

We recommend printing the following checklist and filling it for every client and server. Support from your administrator may be necessary.

In the case of support for this product the personal of id-netsolutions GmbH need to access this information.

Our support is expressly recommended to deliver no support without a fully and correctly filled checklist.

System requirements

ELOoffice

- **Minimum:** **ELOoffice** 6.00.001
- **Recommendation:** **ELOoffice** 8.00.024 or higher

ELOprofessional

- **Minimum:** **ELOprofessional** 4.00.228
- **Recommendation:** **ELOprofessional** 6.00.168 or higher

ELOenterprise

- **Minimum:** **ELOenterprise** 4.00.228
- **Recommendation:** **ELOenterprise** 6.00.168 or higher

Kodak Capture Pro

- **Minimum:** **Kodak Capture Pro** 2.0.0
- **Recommendation:** **Kodak Capture Pro** 2.5.1

2.1. Installation-Checklist Client components

Address-Information	
Company name	
Customer number	
>docufied< Information	
Product name	
Release Version	
Client Information	
Operating system (Win2000-Server; Win2003)	
Service-Pack	

2.2. Installation-Checklist ELO

ELO Information	
Product name (ELOenterprise 6.0)	
Release (6.00.168)	
XML Importer (7.00.00)	

2.3. Installation-Checklist Kodak Capture Pro

Kodak Capture Pro Information	
Product name (Kodak Capture Pro)	
Release (2.0.1)	

3. Help and Support

Do you need additional help?

We show you with pleasure how the software of id-netsolutions GmbH can be used profitably and offer the following additional support-options.

Support per E-Mail (without any costs):

Describe your problem per e-mail and send it to **support@docufied.de**.

Support over internet (with costs):

Depending on your problem one of our employee will be accessing your computer and solve the problem together with you.

Support over telephone (with costs):

A callback with the solution to the problem or the desired advice will be made by one of our support-employees.

[Read more about the advantages of our online support and inform yourself about our prices!](#)

4. Installation

The installation of the output format can be started by starting the file "setup.exe".

4.1. Language

At first you have to choose between one of the two offered languages. The only difference between the languages is the language of the setup. Both languages will always be installed. During the runtime of the output format the language will be determined by the windows system language.

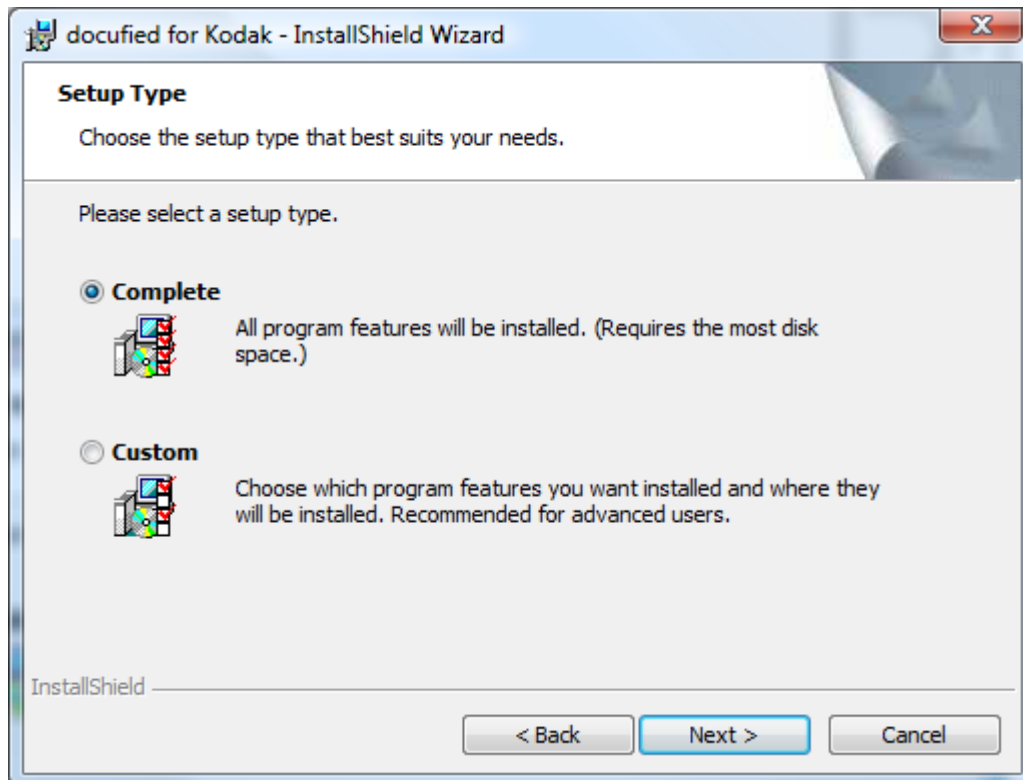
4.2. License Agreement

After the start of the installation you have to confirm the license agreement of the id-netsolutions GmbH.



4.3. Setup Type

You can choose here if all three versions of the output format should be installed or if you want to choose which version should be installed.

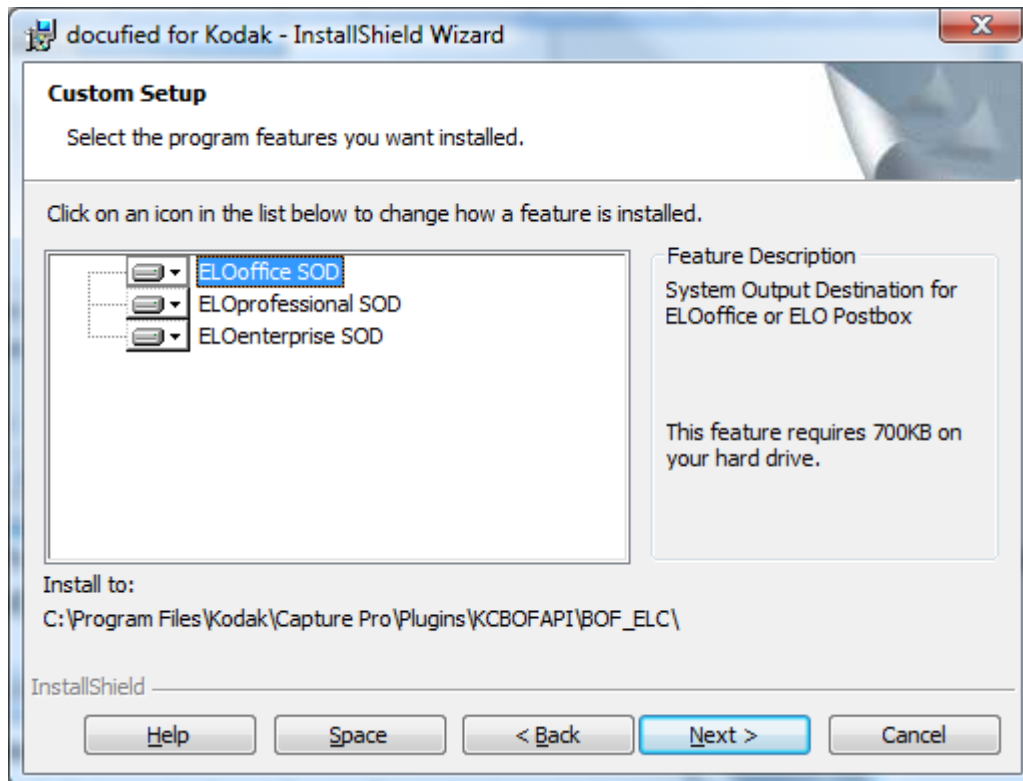


4.3.1. Complete

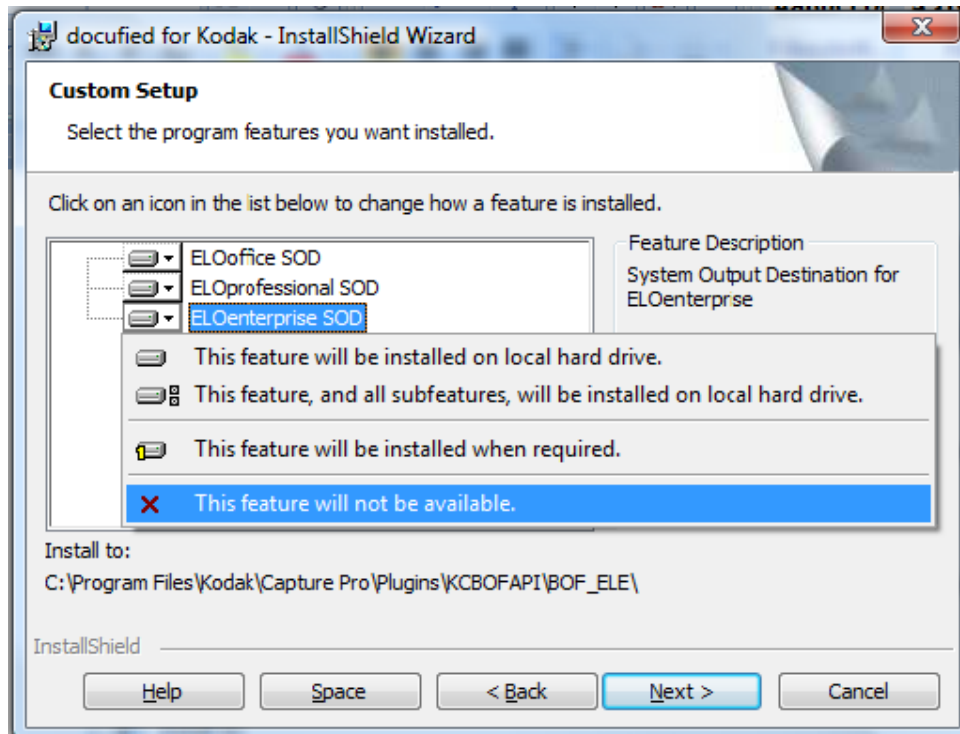
If you choose the setup type "Complete" all three output formats will be installed. Your choice can be confirmed by activating the button "Next". In the next window the installation can be started by activating the button "Install".

4.3.2. Custom

If you choose the setup type "Custom" you can choose which of the three output format you want to install.



With a mouse click on the button next to the entry you can activate or deactivate the corresponding output format.



Your choice can be confirmed by activating the button "Next". In the next window the installation can be started by activating the button "Install".

4.4. Abort

The Setup can be aborted at every step of the setup process. No files will remain on the system except for the setup files themselves. You only have to activate the button "Cancel".

5. Removing the output format

The output format can be removed from the system by the windows system functions for the removal of programs. They are found in the list of installed program with the name "docufied for Kodak". If you chose to remove one or all output formats no files will remain on the system. You can also change which of the output formats you want to have installed on the system.

6. Copyright

The present document contains information protected by copyright. No part of this document is allowed to be changed, copied, duplicated or transferred to a language readable by machines, especially data processing equipment, without written permission of id-netsolutions GmbH.

Product names are not specially marked. The composition of the texts and images was done with the greatest possible care. The publisher reserves the right to change the content of this document without prior notification.

Included are changes to the functionality of the software.

The publisher assumes no responsibility or juristic liability for wrong information and the aftermath of those.

id-netsolutions GmbH

Segeberger Str. 9-13 a
23863 Kayhude

Tel: +49 40 645040-0
Fax: +49 40 645040-999

kontakt@id-netsolutions.de
www.id-netsolutions.de